



# Metropolitan Sewer District of Greater Cincinnati Right of Way GIS Database and Web App

## Project Highlights:

- RA Consultants provided data management services
- Developed web based application and web processing tools

## Services Provided

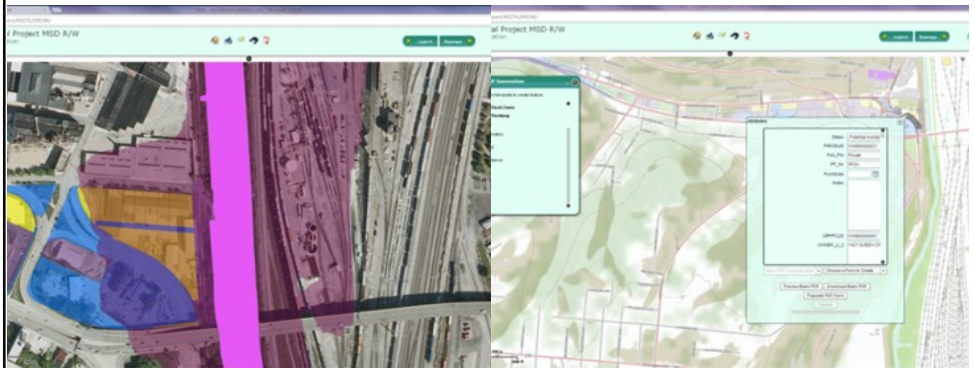
- Base mapping & GIS
- GIS Database Design & Management
- Data analysis
- Web Development

Scan to go to our website



## CONTACT:

**RA Consultants, LLC**  
10856 Kenwood Rd.  
Cincinnati, OH 45242  
(513) 469-6600 (Phone)  
(513) 469-2684 (Fax)  
[info@raconsultantsllc.com](mailto:info@raconsultantsllc.com)  
[www.raconsultantsllc.com](http://www.raconsultantsllc.com)



The Metropolitan Sewer District of Greater Cincinnati (MSDGC) sought a mechanism to streamline the property acquisition process fundamental to their construction projects mandated under a federal Consent Decree. Due to the volume of property involved in these projects, it was determined that a transition from traditional paper documents and records to a digital format would be necessary to enhance efficiencies in this complicated process.

In order to reduce time and duplication of efforts, RA Consultants created a database and a customized web application utilizing MSDGC existing GIS technology. All existing GIS data, parcel records, and site photos were linked and stored in an ESRI SDE GeoDatabase format. The created web map can be accessed with an internet connection and a login and password assists in giving access to personnel anytime of the day. All data changes are logged with a time and date stamp along with the name of the editor inside of the SDE database. Data such as communications with the property owner, assessed value, auditor records are stored directly in the database. Executed documents such as property contracts are attached to the database and can be done so by the editor within the web map application. The web application was developed in the flex API for the ESRI ArcServer and connects to a customized SQL database that relates to the SDE GeoDatabase. Programming languages included in the design of the application is a combination of python script; flex API for ArcGIS server, VB, Java and HTML.