



Butler County Transportation Improvement District South Hamilton Grade Separation Project

Project Highlights

- Providing property acquisition services for 45 parcels
- Developed a GIS based acquisition tracking tool to streamline data communication

Services Provided

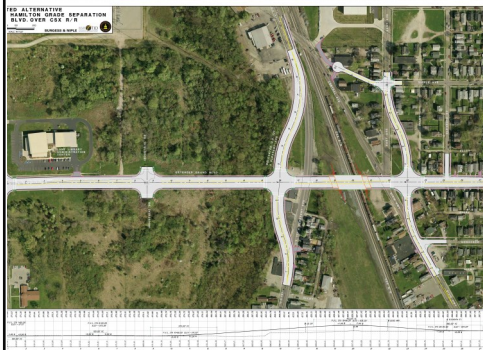
- Negotiation
- Closing
- GIS Services

Scan to go to our website



CONTACT:

RA Consultants, LLC
10856 Kenwood Rd.
Cincinnati, OH 45242
(513) 469-6600 (Phone)
(513) 469-2684 (Fax)
info@raconsultantsllc.com
www.raconsultantsllc.com



With the goals of improving traffic safety, facilitating east-west connectivity, and encouraging economic development opportunities, the City of Hamilton is performing the South Hamilton Crossing—Railroad Grade Separation Project. This crossing is located on a main line of two busy railroads and the High Street underpass is the only unimpeded crossing (except for the narrow one-lane underpass at Corwin Avenue) on the rail that divides the City.

The project requires acquisition of over 100 parcels, including full and partial takes. RA is providing property acquisition services as well as GIS services for the project, including the following:

Property Acquisition:

RA is conducting all acquisition activities in accordance with the Uniform Relocation Assistance and Real Property Acquisition Policies Act of 1970, as amended, and ODOT policies and procedures. This approach is being utilized by RA to acquire 45 parcels for the project. We are providing negotiation and closing services.

GIS Services:

In order to reduce time and duplication of efforts, RA Consultants created a GIS database and a customized web application utilizing ESRI software. This streamlines the right of way operations for the project and gives all staff an easy way to view how the project is progressing. All existing GIS data, parcel records, and site photos are linked and stored in an ESRI SDE GeoDatabase format. The created web map can be accessed with an internet connection and a login and password assists in giving access to personnel anytime of the day.

A new GIS dataset of Project Parcels is queried out of the Butler County parcel data and created to store all project specific data. All project parcel data changes are logged with a time and date stamp along with the name of the editor inside of the SDE database. Data such as communications with the property owner, assessed value, and mailing address are stored directly in the database. Executed documents such as property contracts, and appraisals are attached to the database and can be done so by the editor within the web map application. The data is also accessible by utilizing the ArcGIS online mobile application, which will work on Apple and Android products.